



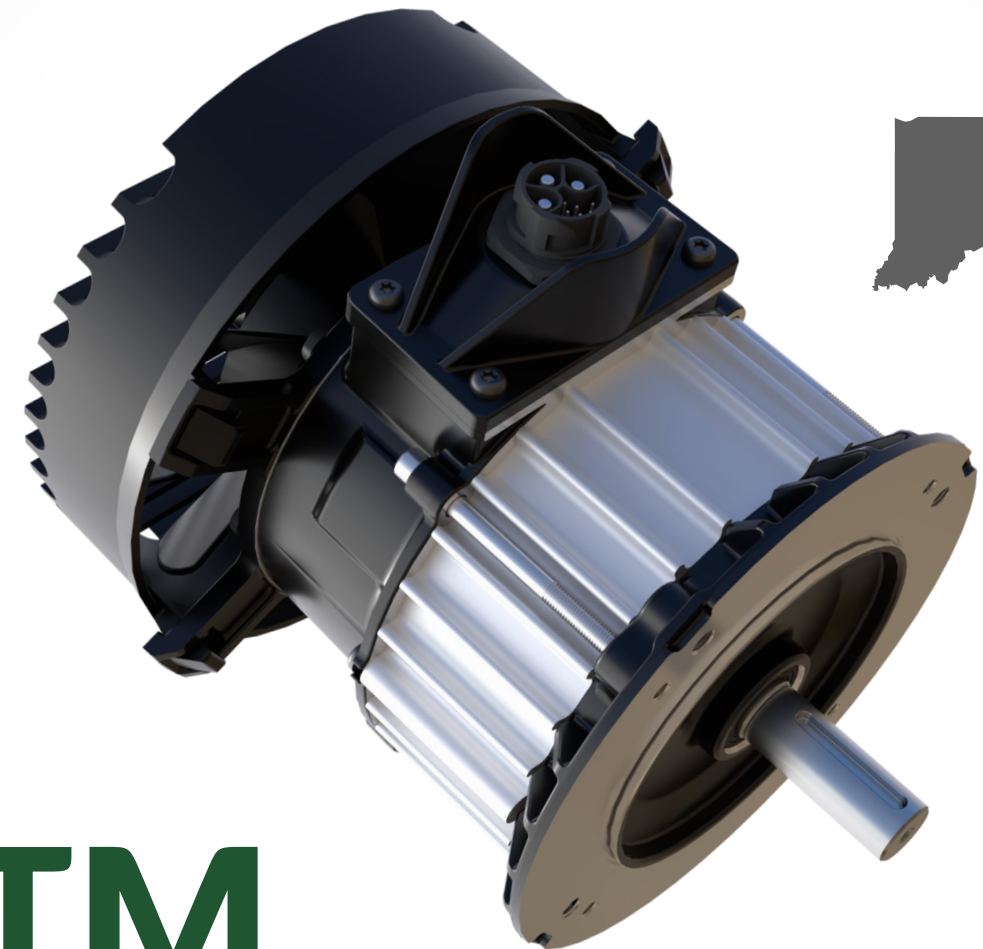
Headquartered in Sullivan, IL USA, Smartec by Hydro-Gear is a world leader in the design and manufacture of precision electric drive solutions and battery powerpacks for the industrial, commercial, and consumer markets. With multiple manufacturing sites and global operations, Smartec's goal is to ensure our products and services meet our customers' rigorous requirements and exceed their expectations.

- **TURF • RESIDENTIAL • COMMERCIAL • RECREATIONAL**
- **CONSTRUCTION • AGRICULTURE • INDUSTRIAL**
- **ON-ROAD • OFF-ROAD • MARINE • MORE**



SMARTEC[®]

by **HYDRO-GEAR**



STM

HIGH EFFICIENCY BLDC MOTOR

- HIGH EFFICIENCY BRUSHLESS DC MOTOR
- VERY COMPACT AND QUIET
- SMOOTH OPERATION EVEN AT LOW SPEEDS
- CANBUS STANDARD
- QUICK SNAP CONNECTOR CONTAINS POWER AND SIGNAL WIRES
- HIGHLY CONTROLLABLE WITH SMARTEC MOTOR DRIVER



CHARGING INTO THE FUTURE.

WE HAVE FLEXIBLE CONFIGURATIONS AND OPTIONS TO FIT YOUR APPLICATIONS.



USE OUR SMARTEC MOTOR DRIVER SYSTEM FOR OPTIMAL CONTROLLABILITY



MOBILE APPS AVAILABLE FOR SET UP, CUSTOMIZATION, AND TROUBLESHOOTING.



PROVEN HISTORY

Our Brand Promise was founded on providing innovative solutions to delight our customers – and we’ve been doing that for over 30 years. Our original SMARTEC products were introduced in 2009 and helped introduce all-electric zero-turn mowers to the world, now we are ready to transform your market.

SYSTEMS APPROACH

Our SMARTEC motors are some of the most advanced electric drives of their kind. A flexible design allows for multiple configurations and options to achieve desired performance while optimizing costs.

UNPARALLELED PERFORMANCE & FLEXIBILITY

We design and manufacture our own brushless-DC motors and controllers to give you the power and control you need, even at very low speeds. We are able to customize the hardware and software of our components to meet your specific application requirements.

CONNECTIVITY

Our components speak the same language via MowNet (our in-house J-1939 base software), our mobile apps aid in set up, troubleshooting, and any desired customization.

STM

HIGH EFFICIENCY BLDC MOTOR



STM MOTOR STANDARDS & OPTIONS

STANDARDS

- 3/4" KEYED SHAFT
- NEMA 56, 4-BOLT MOUNT
- STANDARD END CAP
- SECURE SNAP CONNECTOR

OPTIONS

- VOLTAGE
- STACK HEIGHT
- WINDING
- E-BRAKE
- COOLING FAN
- MOTOR DRIVER
- BLUETOOTH MODULE
- VEHICLE INTEGRATION MODULE
- LITHIUM BATTERY POWERPACKS
- DANFOSS PLUS 1™ COMPATIBLE

STM MOTOR SPECIFICATIONS

MODEL:	STM-4819-4	STM-4828-4	STM-4838-3	STM-4856-2	STM-8828-4	STM-8838-3	STM-8856-4			
NOMINAL VOLTAGE:	52-Vdc	52-Vdc	52-Vdc	52-Vdc	77-Vdc	77-Vdc	77-Vdc			
NO-LOAD SPEED (RPM@V)	4600	3200	3180	3200	4500	3550	3000			
CONT CURRENT-ARMS	26	26	32	45	25	25	25			
MAX. CURRENT-ARMS	130	130	250	300	125	125	125			
CONTINUOUS POWER (kW)	1.2	1.2	1.5	2.4	1.7	1.7	1.7			
CONTINUOUS POWER (HP)	1.6	1.6	2.0	3.2	2.3	2.3	2.3			
PEAK POWER (kW)	4.4	4.4	6.6	8.8	6.1	6.1	6.1			
PEAK POWER (HP)	6	6	9	12	8	8	8			
NOMINAL TORQUE (lbs*in)	26	35	53	87	42	57	65			
MAX. TORQUE (lbs*in)	133	212	422	520	207	280	319			
PHASE	3									
IP RATING	IP66k									
OPERATING TEMP (°C)	-20-50C									
STORAGE TEMP (°C)	-40-90C									
END CAP OPTIONS	ELECTRIC BRAKE, FAN, OR STANDARD END CAP									
MOUNTING	NEMA 56, 4-BOLT									
SHAFT	3/4" KEYED SHAFT									

STM MOTOR APPLICATIONS

- FAN DRIVES
- PUMP DRIVES
- AUGER DRIVES
- CONVEYORS
- WHEEL DRIVES
- SWING DRIVES
- SAW DRIVES
- SPINNING DRIVES
- WINCH DRIVES
- VIBRATORY DRIVES

