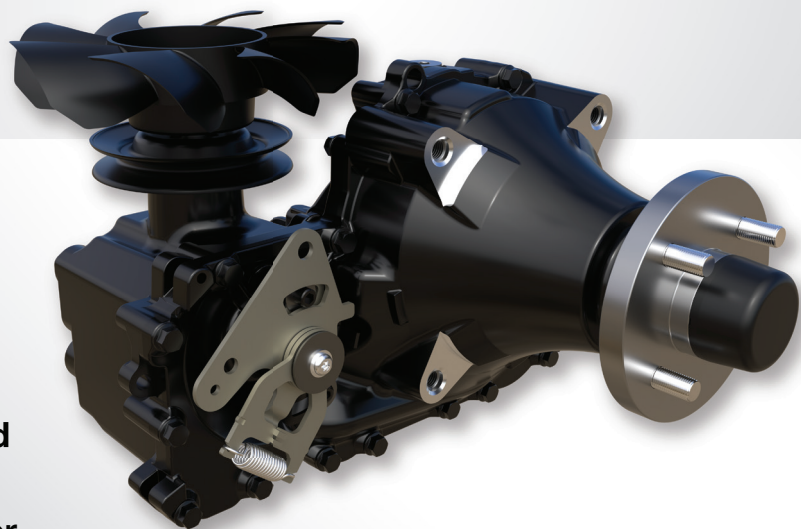


ZT-5400 POWERTRAIN[®]

HEAVY-DUTY COMMERCIAL TRANSAXLE

- Standard performance package
- Reliable and quiet performance each and every time
- Heavy-duty 1-3/8" axle for machines weighing up to 2200 lbs
- Optional transport mode for increased speed
- Our largest and most durable integrated unit with a high efficiency 16cc pump & 21cc motor



RESIDENTIAL

ZT-1800 ZT-2200 ZT-2800

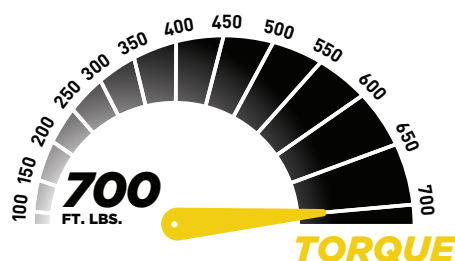
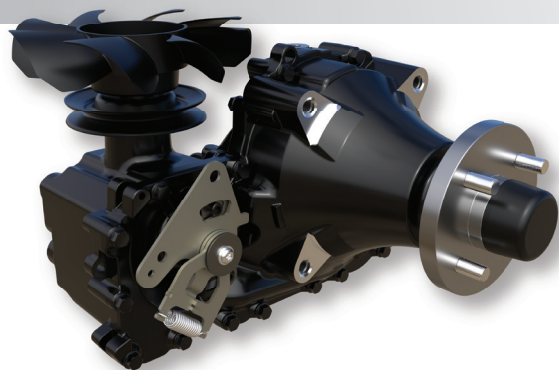
COMMERCIAL

ZT-3100 ZT-3200 ZT-3400 ZT-3600 ZT-3800 ZT-4400 ZT-5400



ZT-5400 POWERTRAIN®

HEAVY-DUTY COMMERCIAL TRANSAXLE



SPECIFICATIONS

PUMP DISPLACEMENT	0.97 in ³ /rev 16 cc/rev
MOTOR DISPLACEMENT	1.33 in ³ /rev 21.8 cc/rev
Input Speeds MAX HI-IDLE (NO LOAD) MIN (LOADED)	3600 rpm 1800 rpm
OUTPUT TORQUE	up to 700 lb-ft up to 949 Nm
SPEED (TRANSPORT MODE)	up to 18 mph up to 29 kph
GROSS VEHICLE WEIGHT	up to 2200 lbs up to 997 kg
AXLE SHAFT DIAMETER	1.375 in 35 mm
AXLE SHAFT OPTIONS	Tapered 4 or 5 Bolt Flange
WEIGHT OF UNIT	57 lbs 25.85 kg

Specifications subject to change without notice