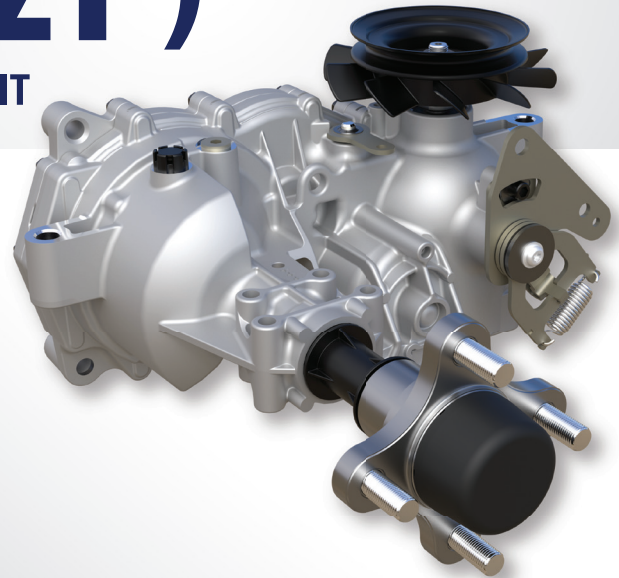


# ZT-2200 (EZT<sup>®</sup>)

HYDRO-GEAR'S MOST POPULAR INTEGRATED UNIT

- Low maintenance design
- Proven performance in a compact package
- Durable 10cc pump & 10cc motor
- 1" axle for increased load support
- Internal mesh oil filter for longer life
- External cog brake for maximum holding power
- External friction brake option



## **RESIDENTIAL**

ZT-1800   ZT-2200   ZT-2800

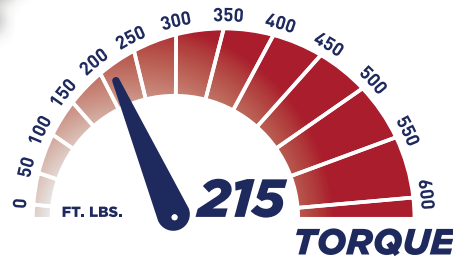
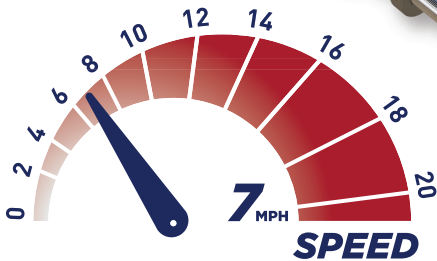
## **COMMERCIAL**

ZT-3100   ZT-3200   ZT-3400   ZT-3600   ZT-3800   ZT-4400   ZT-5400



# ZT-2200 (EZT)<sup>®</sup>

HYDRO-GEAR'S MOST POPULAR INTEGRATED UNIT



## SPECIFICATIONS

PUMP DISPLACEMENT	0.61 in <sup>3</sup> /rev 10 cc/rev
MOTOR DISPLACEMENT	0.61 in <sup>3</sup> /rev 10 cc/rev
Input Speeds MAX HI-IDLE (NO LOAD) MIN (LOADED)	3000 rpm 1800 rpm
OUTPUT TORQUE	up to 215 lb-ft up to 291 Nm
SPEED	up to 7 mph up to 11 kph
GROSS VEHICLE WEIGHT	up to 900 lbs up to 408 kg
AXLE SHAFT DIAMETER	1.0 in 25.4 mm
AXLE SHAFT OPTIONS	DD 4-bolt Flange
WEIGHT OF UNIT	29 lbs 13 kg

*Specifications subject to change without notice*