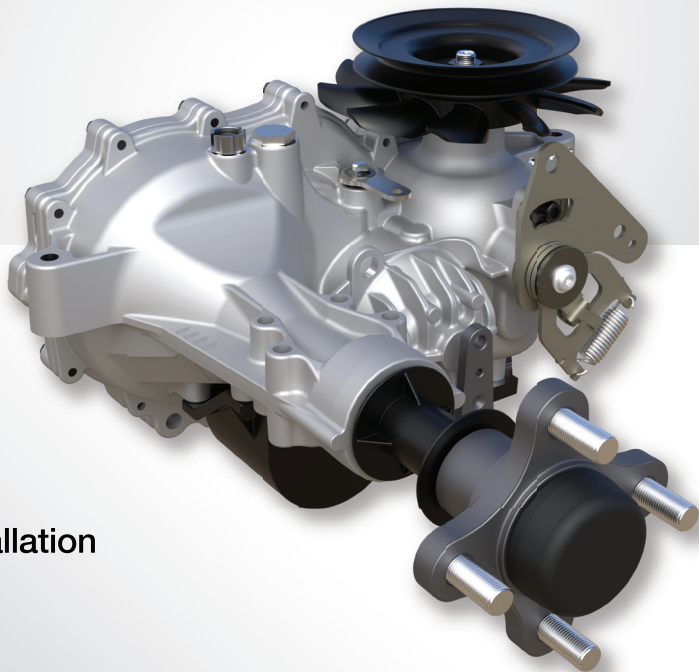


# ZT-3100<sup>®</sup>

## HYDRO-GEAR COMMERCIAL TRANSAXLE

- A commercial entry-level transmission with high-efficiency 10cc pump & 16cc motor
- Included shock valves to protect the system and extend its life
- External oil filter for easy maintenance
- Optional internal expansion tank for easier installation
- Performance package - Shock valves, Cut steel gears, and Charge pump



### **RESIDENTIAL**

ZT-1800   ZT-2200   ZT-2800

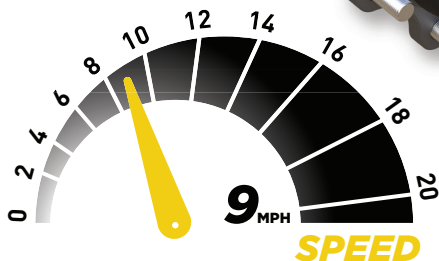
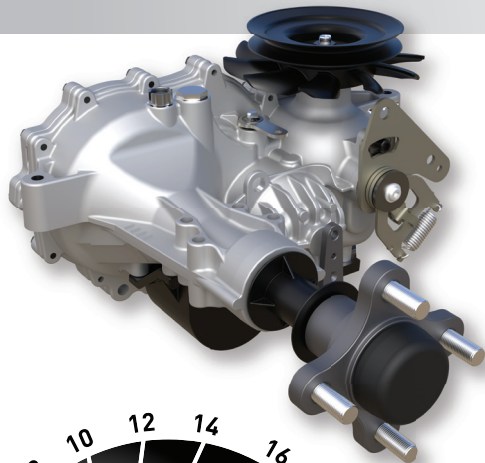
### **COMMERCIAL**

ZT-3100   ZT-3200   ZT-3400   ZT-3600   ZT-3800   ZT-4400   ZT-5400



# ZT-3100<sup>®</sup>

## HYDRO-GEAR COMMERCIAL TRANSAXLE



### ***SPECIFICATIONS***

PUMP DISPLACEMENT	0.61 in <sup>3</sup> /rev 10 cc/rev
MOTOR DISPLACEMENT	0.97 in <sup>3</sup> /rev 16 cc/rev
Input Speeds MAX HI-IDLE (NO LOAD) MIN (LOADED)	3600 rpm 1800 rpm
OUTPUT TORQUE	up to 350 lb-ft up to 474 Nm
SPEED	up to 9 mph up to 14 kph
GROSS VEHICLE WEIGHT	up to 1200 lbs up to 544 kg
AXLE SHAFT DIAMETER	1.0 in 25.4 mm
AXLE SHAFT OPTIONS	Tapered 4 or 5 Bolt Flange
WEIGHT OF UNIT	32.5 lbs 14.7 kg

*Specifications subject to change without notice*