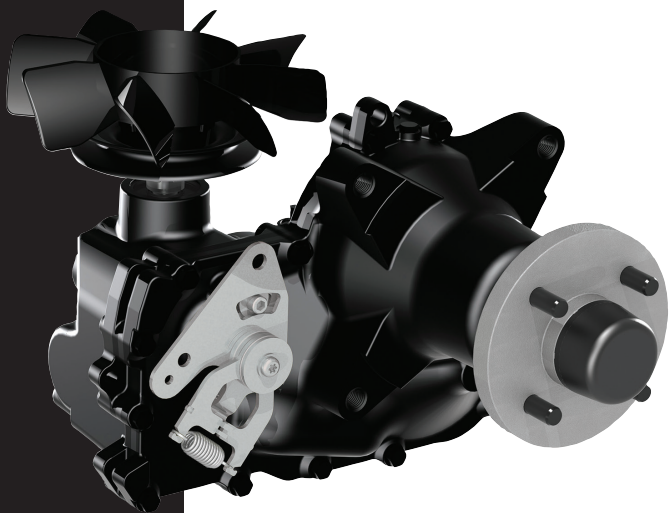


**ZT-4400™**

## REVOLUTIONARY HYDRAULIC DESIGN

- ⚙️ Heavy-duty commercial grade transaxle
- ⚙️ Industry leading 1- $\frac{3}{8}$  inch axle for heavier loads
- ⚙️ High capacity thrust bearing for longer life
- ⚙️ Designed to fill the gap—perfect for machines up to 1800 lbs



**HYDRO-GEAR®**  
**COMMERCIAL**

**DESIGNED & ASSEMBLED IN THE USA**

# ENGINEERED TO PERFORM

## SPECIFICATIONS

<b>Pump Displacement</b>	<b>0.73 in<sup>3</sup>/rev</b> [12 cc/rev]
<b>Motor Displacement</b>	<b>0.97 in<sup>3</sup>/rev</b> [16 cc/rev]
<b>Input Speeds</b>	
Max Hi-idle (No Load)	3600 rpm
Min (Loaded)	1800 rpm
<b>Output Torque</b>	<b>up to 575 lb-ft</b> [up to 780 Nm]
<b>Speed</b>	<b>up to 12 mph</b> [up to 19 kph]
<b>Gross Vehicle Weight</b>	<b>up to 1800 lbs</b> [up to 816 kg]
<b>Axle Shaft Diameter</b>	<b>1.375 in</b> [35 mm]
<b>Axle Shaft Options</b>	<b>Tapered</b> <b>4 or 5 bolt Flange</b>
<b>Weight of Unit</b>	<b>55 lbs</b> [25 kg]

*Specifications subject to change without notice*



ZT4400-09/2016-V1

**FOR MORE INFORMATION VISIT:  
WWW.HYDRO-GEAR.COM**

